



Recent trends of groundwater temperatures in Austria

Susanne A. Benz¹, Peter Bayer², Gerfried Winkler³, and Philipp Blum¹

¹Institute of Applied Geosciences (AGW), Karlsruhe Institute of Technology (KIT), Karlsruhe, 76131, Germany

²Institute of new Energy Systems (InES), Ingolstadt University of Applied Sciences, Ingolstadt, 85019, Germany

³Institute of Earth Sciences (IEW), NAWI Graz Geocenter, University of Graz, Graz, 8010, Austria

Correspondence: Susanne A. Benz (susanne.benz@kit.edu)

Received: 10 November 2017 – Discussion started: 23 November 2017

Revised: 7 May 2018 – Accepted: 10 May 2018 – Published: 6 June 2018

Abstract. Climate change is one of if not the most pressing challenge modern society faces. Increasing temperatures are observed all over the planet and the impact of climate change on the hydrogeological cycle has long been shown. However, so far we have insufficient knowledge on the influence of atmospheric warming on shallow groundwater temperatures. While some studies analyse the implication climate change has for selected wells, large-scale studies are so far lacking. Here we focus on the combined impact of climate change in the atmosphere and local hydrogeological conditions on groundwater temperatures in 227 wells in Austria, which have in part been observed since 1964. A linear analysis finds a temperature change of $+0.7 \pm 0.8$ K in the years from 1994 to 2013. In the same timeframe surface air temperatures in Austria increased by 0.5 ± 0.3 K, displaying a much smaller variety. However, most of the extreme changes in groundwater temperatures can be linked to local hydrogeological conditions. Correlation between groundwater temperatures and nearby surface air temperatures was additionally analysed. They vary greatly, with correlation coefficients of -0.3 in central Linz to 0.8 outside of Graz. In contrast, the correlation of nationwide groundwater temperatures and surface air temperatures is high, with a correlation coefficient of 0.83 . All of these findings indicate that while atmospheric climate change can be observed in nationwide groundwater temperatures, individual wells are often primarily dominated by local hydrogeological conditions. In addition to the linear temperature trend, a step-wise model was also applied that identifies climate regime shifts, which were observed globally in the late 70s, 80s, and 90s. Hinting again at the influence of local conditions, at most 22 % of all wells show these climate regime shifts. However, we were able to identify an additional shift in 2007, which was observed by 37 %

of all wells. Overall, the step-wise representation provides a slightly more accurate picture of observed temperatures than the linear trend.

1 Introduction

The thermal regime in the ground is coupled with the conditions in the atmosphere, and air temperature variations leave their traces in the ground. While already at a depth of a few metres, the amplitudes of periodic diurnal and seasonal temperature trends are strongly attenuated (Taylor and Stefan, 2009), long-term non-periodic changes of air temperature permanently influence the subsurface down to greater depths of several tens to hundreds of metres (Beltrami et al., 2005). Worldwide, borehole temperature profiles therefore show an increase in surface air temperature (SAT) due to recent climate (Huang et al., 2000; Harris and Chapman, 1997). In borehole climatology, the focus is set on “dry” boreholes in undisturbed natural areas, that is, boreholes with negligible influence of groundwater flow and no direct human impacts. Borehole temperatures logged in such boreholes can be used to invert vertical conductive heat transport models for deriving the corresponding trend of ground surface temperature (GST). By assuming that GST and SAT are directly coupled or similar, past climate can be reconstructed. Many boreholes, however, are located in urbanized areas and regions with past changes in land cover, where often accelerated ground heat flux and higher GST are observed (Bense and Beltrami, 2007; Menberg et al., 2013; Bayer et al., 2016; Cermak et al., 2017). Moreover, in humid climate regions boreholes are mostly not dry, but drilled for groundwater use or monitoring. When dynamic groundwater flow conditions ex-

ist, then advective heat transport can substantially affect the thermal regime in the subsurface (Ferguson et al., 2006; Kollet et al., 2009; Taylor and Stefan, 2009; Stauffer et al., 2017; Westaway and Younger, 2016; Uchida et al., 2003). Additionally, recharge processes, including snowmelt and rain-derived recharge, might impact the thermal regime of the shallow subsurface. Previous studies, however, indicate that in many cases their influence can be neglected. Ferguson and Woodbury (2005) and Bense and Kurylyk (2017) demonstrated that it is possible to estimate groundwater recharge by using temperature–depth profiles based on the common assumption that the mean annual groundwater recharge temperature is equal to the mean annual surface air temperature. Menberg et al. (2014) showed in their study that the contribution of snowmelt-induced recharge with low temperature is minor in comparison to the overall recharge. Finally, Molina-Giraldo et al. (2011) investigated the impact of seasonal temperature signals on an aquifer upon bank infiltration, also including varying groundwater recharge temperatures. They showed that the convective heat transfer by groundwater recharge compared to conduction through the unsaturated zone and convection within the aquifer is of minor impact. Still, the interplay of long-term climate variations, land use change and groundwater produces a complex transient system, which is difficult if not impossible to accurately understand based on a few borehole measurements (Irvine et al., 2016; Kupfersberger et al., 2017; Kurylyk et al., 2017, 2014, 2013; Taniguchi and Uemura, 2005; Taniguchi et al., 1999; Zhu et al., 2015).

The consequence of climate change for aquifers was illuminated with respect to groundwater recharge and availability of freshwater resources (Moeck et al., 2016; Scibek and Allen, 2006; Holman, 2006; Gunawardhana and Kazama, 2011; Loáiciga, 2003), groundwater quality impacts (Kolb et al., 2017) and effects on groundwater(-dependent) ecosystems (Burns et al., 2017; Jyväskylä et al., 2015; Kløve et al., 2014; Andrushchysyn et al., 2009; Hunt et al., 2013). Taylor et al. (2012) summarized various connections and feedbacks between climate change and groundwater. A key parameter is the temperature, which is expected to increase in shallow groundwater globally following with some delay roughly the trends in the atmosphere. However, long-term measurements of temperature evolution in groundwater are rare (Watts et al., 2015; Figura et al., 2015). Instead, often well measurements taken at a few different time points are compared to indicate elevated temperatures, such as by Gunawardhana and Kazama (2011) for the Sendai Plain in Japan, by Šafanda et al. (2007) for boreholes in the Czech Republic, Slovenia, and Portugal, and Yamano et al. (2009) and Menberg et al. (2013) for urban areas in eastern Asia and central Europe. Others, such as Kupfersberger (2009) and Menberg et al. (2014), examine repeated temperature records of single or a few selected wells. The work by Lee et al. (2014) is one of the very few studies on long-term groundwater temperature (GWT) time series recorded for a larger

area. They applied linear regression to hourly temperature data recorded from 2000 to 2010 at 78 South Korean national groundwater monitoring sites. They found a mean increase of $0.1006 \text{ K year}^{-1}$ and concluded that shallow ground and surface temperature show moderate proportionality. Lee et al. (2014), however, reported that 12 wells revealed decreasing GWT trends without further details on potential factors. Blaschke et al. (2011) applied trend analyses to long-term data sets of mean annual GWT of 112 and 255 wells for the time periods 1955–2006 and 1976–2006 respectively in Austria. They found increasing trends of the GWT in shallow porous aquifers related to increasing air temperature. Similar insights from other regions are still lacking, and the contribution of atmospheric warming to long-term GWT evolution is nearly unexplored.

In the presented study, GWTs of 227 wells in Austria, measured in part since 1966, are analysed and regional patterns and temperature anomalies are identified. In contrast to Blaschke et al. (2011), the focus here is not only set on linear trends, but also on detection of climate regime shifts in the measured GWT, following the suggestions by Figura et al. (2011) and Menberg et al. (2014). As a relevant mode of global climate variability, long-lived decadal patterns such as the Atlantic or Pacific decadal oscillation have been identified, e.g. Minobe (1997) and Rodionov (2004). These control atmospheric temperatures as well and are often described as sudden, step-wise temperature changes separating stable periods, called climate regimes. Even if these regime shifts arrive attenuated and delayed in shallow groundwater, they can be detected and thus can offer another hint at the influence of climatic variations. Aside from the statistical analysis of GWT time series, the influence of land cover as well as their correlation with surface air temperature are investigated to scrutinize potential local influences on the measured data.

2 Material and methods

2.1 Material

2.1.1 Geology, hydrogeology and climate of Austria

The Austrian Alps as the main part of the European Eastern Alps are characterized by a complex geology with various lithologies and were built up during multiple tectonic phases striking now in a west–east direction. The complexity of the tectonic and geologic settings of the European Alps and in particular of the European Eastern Alps is described and discussed by numerous authors (e.g. Schmid et al., 2004; Linzer et al., 2002). Active tectonic evolution resulting in high topography and uplift rates coincided largely with high stream power (Robl et al., 2017, 2008) and thus had an impact on the drainage system of the Alps. During the Pleistocene the Alps were affected by glaciations with a strong impact on the morphology, in particular on the inner Alpine valleys and the

foreland. Due to sedimentation during the Holocene these areas now contain Quaternary porous aquifers. The herein analysed wells are located in shallow aquifers representing these Quaternary sediments in the inner Alpine valleys and foreland basin. Based on a compiled geology a hydrogeological overview as a hydrogeological map of Austria is provided by Schubert et al. (2003).

Climate and climate trends during the last 2 centuries (1800–2000) of the Great Alpine Region (European Alps and their surrounding foreland, GAR) were intensively investigated during the last few decades, yielding the HISTALP data set (Auer et al., 2007). This data set left its mark on the regional classification of climate zones by Köppen–Geiger, where Austria is mainly divided into three climate zones, warm temperate, boreal, and Alpine.

2.1.2 Groundwater temperatures

In Austria, GWTs up to December 2013 are provided by the Austrian Federal Ministry of Sustainability and Tourism Directorate-General IV. – Water Management (BMNT, 2016), the former Federal Ministry of Agriculture, Forestry, Environment and Water Management (BMLFUW) in 1138 wells. Here, we focus on all wells with a measurement depth of less than 30 m, a record of at least 20 years and no major breaks (> 3 months) in the last 20 years of the time series. Hence, all studied wells have been monitored since at least January 1994, and some already since 1966 (see Fig. S1a in the Supplement for more information). Additionally, wells impacted by geothermal hot springs were excluded. Overall, in this study annual mean data of 227 individual wells from all over the country (Fig. 1a) are analysed. Years with less than 9 months of data are excluded. For the timeframe 1994–2013, this amounts to 74 excluded data points in 60 wells. Additionally, only 9–11 months of data were available for 260 data points in 122 wells. To minimize the associated bias, these small gaps in the time series were filled using a linear fit. Hence small errors for years without a full set of monthly mean data have to be expected.

The average measurement depth in the wells is 7 ± 4 m below ground surface (Fig. S1b). All wells are located in the Cfb climate zone of the Köppen–Geiger classification, warm temperate climate with warm summers and no dry seasons (Rubel et al., 2017). The spatial median GWTs and inner 90 percentiles for all wells are displayed in Fig. 1b. The obtained temperature in Fig. 1b increases from around 9.8°C in 1966 to 11.4°C in 2013.

Following the CORINE Land Cover (CLC) data from 2012 (Fig. S2a), 45 % of all wells are under artificial surfaces, 46 % under agricultural areas, and 9 % under forest following the $100\text{ m} \times 100\text{ m}$ classification. In addition, CLC from 1990 was consulted; however, no land cover changes near any of the analysed wells are observed. Overall, for the time period 1994–2013, absolute GWTs of the monitored wells under artificial surfaces are on average $1.5 \pm 0.3\text{ K}$

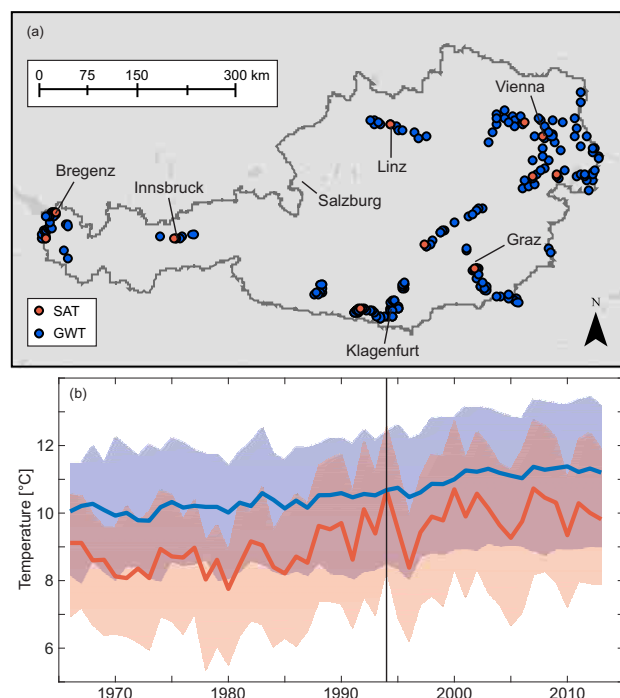


Figure 1. (a) Location of all analysed groundwater temperature (GWT – 227 wells) and surface air temperature (SAT – 12 weather stations) measurement points; (b) temporal evolution of the spatial median and annual mean temperatures for groundwater (blue) and air (red). The inner 90 percentiles are marked in lighter colours. All time series were monitored since at least 1994.

warmer than GWTs under forest; GWTs under agricultural areas are on average $0.6 \pm 0.2\text{ K}$ warmer than GWTs under forest (Fig. S2b). This validates previous findings by Benz et al. (2017b) for GWTs in Germany, who identified even larger differences of up to 3 K between the individual land cover classes.

2.1.3 Surface air temperatures

Surface air temperatures (SATs) within Austria are monitored by the Central Institution for Meteorology and Geodynamics (ZAMG), Austria. In this study data from 12 individual weather stations are being analysed, each one located within 5 km of at least one analysed well and in the same climate zone (Cfb). Their location is displayed in Fig. 1a. Again, annual mean data were available for a time period of 1966–2013 (Fig. 1b). As expected and as previously shown in Benz et al. (2017b) for SAT and Benz et al. (2017a) for land surface temperatures, above-ground temperatures are generally lower than GWTs. All 12 analysed weather stations are located in areas classified as artificial surface and experienced no land cover changes.

2.2 Method

2.2.1 Correlations

Within this study, the Spearman correlation coefficient was determined, as it is especially robust to outliers caused for example by heat waves, which impact air temperatures but have only minor effects on groundwater temperatures. When determining the correlation between two time series, missing years were ignored. Next to the correlation between GWT and SAT, correlations between all individual wells and weather stations were determined in order to create a plot similar to a (semi)variogram that shows the correlation between two measurement stations, depending on their distance to each other.

2.2.2 Linear analysis

Equivalent to the work by Lee et al. (2014), a linear temperature change was determined for all 227 wells. For this, a linear regression model of the annual mean temperature data was determined in Matlab (Version 2016b). Because all wells in our data set were continuously monitored between 1994 and 2013, only this timeframe was analysed.

2.2.3 Climate regime shifts

Climate data are often thought not to change linearly, but in the form of a step function, dividing a time series into individual climate regimes of a constant mean (Andrushchyshyn et al., 2009; Minobe, 1997). These regimes are changed when so-called climate regime shifts (CRS) occur and long-term mean values change. While several methods to model these shifts have been in use (Easterling and Peterson, 1995), in recent years the method by Rodionov (2004) has become standard. It identifies the significance of each possible shift by calculating the so-called Regime Shift Index (RSI): the cumulative sum of the normalized differences between the observed values and the long-term mean of the assumed regime. Only shifts with a positive RSI are considered significant, and a higher value of RSI denotes more pronounced CRS. The entire algorithm is described in detail by Rodionov (2004). This sequential analysis is data driven and requires no prior knowledge of the timing of possible shifts. It was updated to further include prewhitening in order to reduce background noise (Rodionov, 2006) and is available online as a Microsoft Excel add-in (NOAA, 2017). In this study we applied the method to the complete time series of all 227 wells and 12 weather stations. Because the algorithm cannot handle gaps within the analysed series, gaps in our data were filled using a linear fit. All parameters were set to the same values as in the work by Menberg et al. (2014), who applied the method to four GWT time series in Germany. A target significance level of 0.15 was used by Menberg et al. (2014), and in our analysis, the cut-off length was set to 10 years and the Huber weight parameter was set to 1.

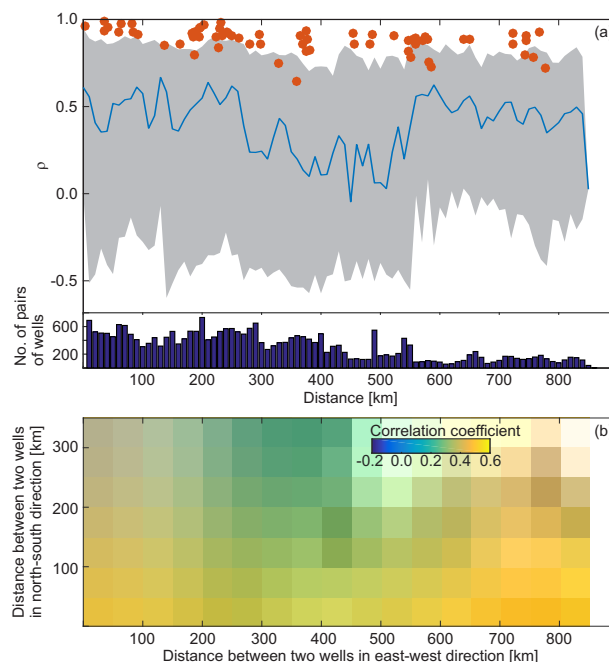


Figure 2. Influence of distance on the correlation between the annual means of two measurement points. **(a)** The correlation between SAT time series is given in red, and the median correlation between GWT time series is given in blue. The inner 90 percentile is coloured in grey, and the number of pairs of wells per distance is shown in dark blue below. **(b)** The colour gives the median correlation between GWTs of two wells in relation to their absolute distance to each other in the east–west direction (x axis) and in the north–south direction (y axis).

3 Results and discussion

3.1 Correlations

Figure 2a displays the correlation between different wells or rather different weather stations in relation to their distance to each other. Shown is the distance between two wells/weather stations on the x axis and the corresponding Spearman correlation coefficient between them. For the weather station, each individual pair is shown by a red point; for GWTs, as there are many possible pairs of wells, the line gives the moving median (± 25 km) correlation of all pairs at the corresponding distances. The inner 90th percentiles are shown in grey, and correlation coefficients close to or below zero are determined for several pairs of wells. However, here p values are generally also close to 1 and GWTs do not correlate. This is most likely due to local heat sources impacting at least one well in these pairs.

As expected the moving average correlation decreases with distance. This decrease is more extreme in GWTs than in SATs and GWTs correlate less than SATs overall. This agrees with the observations in Benz et al. (2017b), who

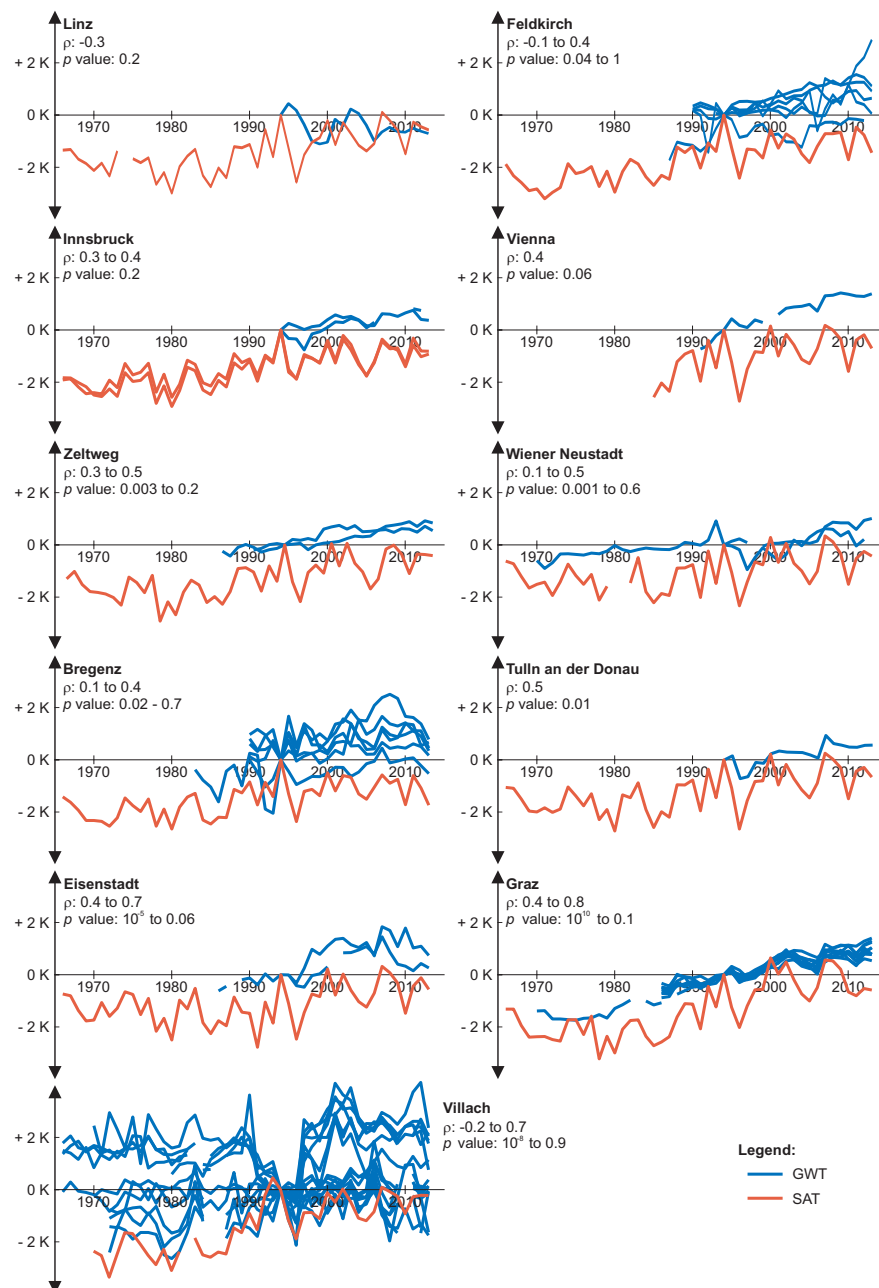


Figure 3. Change from 1994 in surface air temperature (SAT) and groundwater temperatures (GWTs) of all wells within 5 km of the analysed weather station. See Fig. S3 for an overview of the locations. Minimum and maximum correlations and p values between individual wells and weather stations are given.

showed that annual mean GWTs show greater variations than SAT over the same distances.

Additionally, the correlation between two wells seems to be anisotropic: correlation coefficients between two wells decrease faster with north–south distance than with west–east distance (Fig. 2b), which can be explained by the dominant striking direction of the geology and the resulting topography in Austria, where valleys generally run from west to east.

Hence, larger rivers typically follow this direction and wells at the same latitude experience similar temperature signals.

In a next step, correlations between GWT and SAT are determined. On a country-wide scale the Spearman correlation coefficient between spatial median GWT and SAT (Fig. 1b) is 0.83. In comparison, the correlations between individual weather stations and wells are shown in Fig. 3; locations are displayed in detail in Fig. S3. Here correlations vary greatly

Table 1. Correlation coefficient and corresponding *p* value between spatial median SAT and spatial median GWT for all analysed SAT locations, and additional information.

| Location | Number of wells | Measurement depth GWT (m below surface) | Number of weather stations | Spearman correlation | <i>p</i> value | Population* |
|--------------------|-----------------|---|----------------------------|----------------------|-------------------|-------------|
| Linz | 1 | 10 | 1 | −0.31 | 10 ^{−1} | 192 000 |
| Feldkirch | 6 | 4 to 17 | 1 | 0.19 | 10 ^{−1} | 31 000 |
| Innsbruck | 2 | 10 | 2 | 0.37 | 10 ^{−1} | 123 000 |
| Vienna | 1 | 12 | 1 | 0.41 | 10 ^{−2} | 1 740 000 |
| Zeltweg | 2 | 6 to 7 | 1 | 0.48 | 10 ^{−3} | 7000 |
| Wiener Neustadt | 2 | 9 to 20 | 1 | 0.51 | 10 ^{−4} | 42 000 |
| Bregenz | 6 | 4 to 10 | 1 | 0.52 | 10 ^{−3} | 28 000 |
| Tulln an der Donau | 1 | 7 | 1 | 0.54 | 10 ^{−2} | 15 000 |
| Eisenstadt | 2 | 4 to 5 | 1 | 0.67 | 10 ^{−4} | 13 000 |
| Graz | 9 | 4 to 12 | 1 | 0.73 | 10 ^{−8} | 266 000 |
| Villach | 17 | 3 to 11 | 1 | 0.80 | 10 ^{−11} | 60 000 |

* Register-based Labour Market Statistics 2014, municipality level (Statistik Austria, 2017).

and Spearman correlation coefficients are < 0.5 for about half of all wells within 5 km of a weather station. This indicates that GWTs are often influenced by local causes and not necessarily solely by local SATs. The lowest correlation is determined in Linz, where the groundwater is intensively used for cooling and heating (Krakow and Fuchs-Hanusch, 2016). The studied well is located within the city centre next to train tracks and office buildings. Hence, it is very likely that the thermal properties of the groundwater are dominated by anthropogenic influences from heated buildings and underground structures, as is often the case in subsurface urban heat islands (Menberg et al., 2013; Benz et al., 2015, 2016; Attard et al., 2016). This would also explain the high GWTs that are on average 3.3 K warmer than the local annual mean SAT. Like the well, the weather station is also located within the city centre.

The best correlations between individual pairs of a well and a weather station can be observed in the southern part of the city of Graz, where all wells and the weather station are located close to or within Graz airport, respectively. The well with the highest correlation of 0.80 with SAT is located less than 1 km from the weather station close to the airport parking lot next to suburban housing. It has been continuously monitored since 1970 and is the longest time series in the area. The well with the lowest correlation (0.45) with the weather station here is located slightly to the east near a dog park and suburban housing. Here observations started in 1994: it is the shortest time series in this area. At all other wells, measurements began in 1986 and show correlations between 0.6 and 0.7 with SAT, indicating that the duration of the measurements plays a significant role for local comparisons. In contrast, duration of the time series appears to be of minor importance on a country-wide scale. For example, the long time series in Wiener Neustadt (Fig. 3), which

started measurements in 1970 and is located near a mineral extraction site, has a correlation of 0.48 and is therefore comparable to the short time series in Graz, starting in 1994 and located in a suburban area.

Additionally, measurement depths of GWT can have an impact on the correlation between SAT and GWT. While it is generally assumed that a measurement depth closer to the surface results in a better correlation with SAT as there is less of a shift between both data sets, this is only the case for some of the locations analysed here, such as Villach (Fig. S4a). In contrast, correlation increases with GWT measurement depth for other locations, such as the one in Graz. This might be related to local underground heat sources such as sewage systems impacting GWT near the surface more than temperatures at greater depth. However, as the depth of the wells analysed here varies only slightly, no definite conclusions can be drawn without further inspection of specific cases.

Table 1 displays the correlations between spatial median GWT and spatial median SAT for each of the SAT locations in Figs. 3 and S3. For all locations with at least two wells besides Zeltweg and Graz correlation does improve when spatial median GWT is analysed instead of the individual locations. In all likelihood the spatial median GWT provides a more general temperature trend that is not influenced by local influences on temperatures such as construction work, plant development and shading, and is therefore more closely related to surface air temperatures.

In addition, the data indicate that city size, or rather population of a city, do not necessarily influence the correlation between GWT and SAT (Table 1). For example, both locations, Graz (population of more than 250 000) and Eisenstadt (population of 13 000), have similar correlation coefficients despite their different populations. Meanwhile, Bregenz and Feldkirch have a similar population ($\sim 30\,000$) and number

of wells (six), but different correlation coefficients (0.52 and 0.19). However, it is also important to note that not all wells analysed here are located in the city centre; still, all of them are in close proximity (< 250 m) to anthropogenically used areas (Fig. S3).

3.2 Linear temperature change

During the time between 1994 and 2013, GWTs changed on average by $+0.36 \pm 0.44$ K per 10 years and SAT on average by $+0.24 \pm 0.13$ K per 10 years. The lower changes in SAT are most likely due to the chosen timeframe: a heat wave in summer 1994 led to extraordinarily high annual mean SAT in this year (Fig. 1b) and thus impacted the determined linear temperature change. The increase in GWT is in good agreement with results of a former study considering data sets of Austria from 1976 to 2006 (Blaschke et al., 2011). However, it is more than double the global air temperature increase determined by Jones et al. (1999) for the timeframe 1978 to 1997, with $+0.32$ K in 20 years and less than the numbers given in the work by Ji et al. (2014). In their global study they give an air temperature increase of more than 0.4 K for the timeframe 2000 to 2009 for the northern mid-latitudes including Austria. Figure 4 displays a map and a histogram of all determined GWT changes. There appears to be no significant influence of land cover on the observed temperature change (Fig. S2c). Median temperature change is approximately 0.4 ± 0.4 K per 10 years for groundwater under artificial surfaces and forest areas, and 0.3 ± 0.5 K per 10 years under cultivated areas. However, temperature change decreases slightly with GWT measurement depth by approximately 0.015 K per 10 years per metre (Fig. S4b). This relationship can be related to deeper temperatures corresponding to earlier temperatures, when temperature increase was less severe. However, because the vast majority of temperatures are monitored at a depth of less than 15 m and show a high variability in linear temperature change, this number must be treated with caution. R^2 of the fit is only 0.02 and RMSE is 0.4 K.

To evaluate the goodness of this linear approach when representing climate change, RMSE of the fit was determined for each well for 1994 to 2013. We found an average RMSE of 0.4 ± 0.2 K.

When looking at the individual wells, no obvious spatial pattern for temperature changes is visible (Fig. 4). However, most wells with temperature changes lower than the 5th percentile are located close to the Drava River in Ferlach, Villach, and Kleblach-Lind in the very south of Austria (Figs. 5 and S5). Although they are up to 80 km away from each other, all of these wells show a sudden drop in temperatures in the year 2007 (wells Ia, Ib, IIa, IIb, Va, and Vb marked in blue in Fig. 5). This temperature reduction can be seen in most of the 27 wells that are less than 1 km from the Drava (Fig. S6); for 24 of these wells, temperatures in 2006 are more than 0.6 K warmer than temperatures in 2008. How-

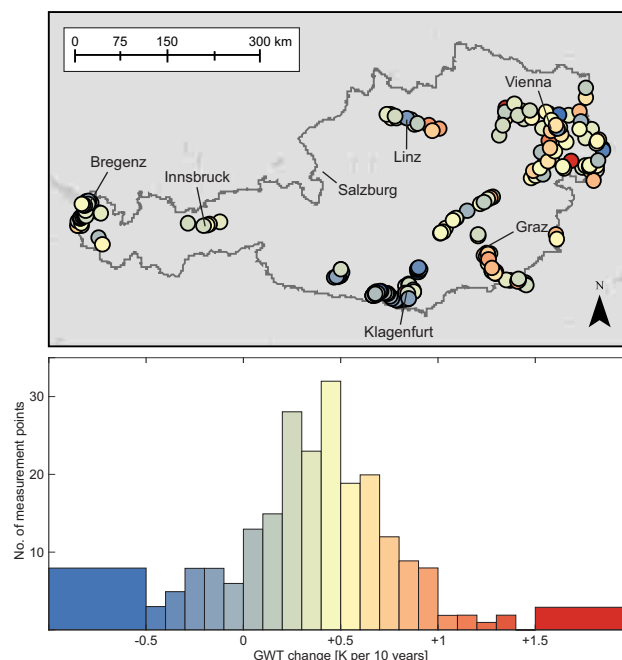


Figure 4. Increase in temperature for all individual measurement points for the 20-year timeframe January 1994 to December 2013. The mean change in groundwater temperature is $+0.4 \pm 0.5$ K per 10 years.

ever, temperatures (as well as additional parameters such as water level) within the river do not indicate any connection between this sudden temperature reduction and the Drava River (Fig. S6). Either way, further research is necessary to identify the cause of this temperature anomaly.

Additionally, three other wells in the lowest 5 % of temperature change are all located less than 10 km from each other near the village of Kappel am Krappfeld (wells IVa, b and c marked in orange in Fig. 5). They and also additional surrounding wells show a steep decline in temperatures in 2006 before temperatures start to increase steadily again. These wells seem to be affected by the new drinking water supply (four wells with a total pumping rate of about 100 L s^{-1}) located about 1 km to the south. This demonstrates the importance of including groundwater flow when trying to interpret groundwater temperature. In general, most of the extreme changes in temperature appear to be linked to local causes and do not happen gradually, but rather rapidly over the short time span of 1 or 2 years. Another example of this can be seen in wells with temperature changes higher than the 95th percentile (Figs. 5 and S7). While these highest 5th percentiles of all wells do not show local clusters to the same extent as the lowest 5th percentiles and can be observed all over the country, three wells (1a, 1b and 1c, marked in dark blue in Fig. 5) are located in the industrial area of Villach in the south of Austria. Here some construction work during

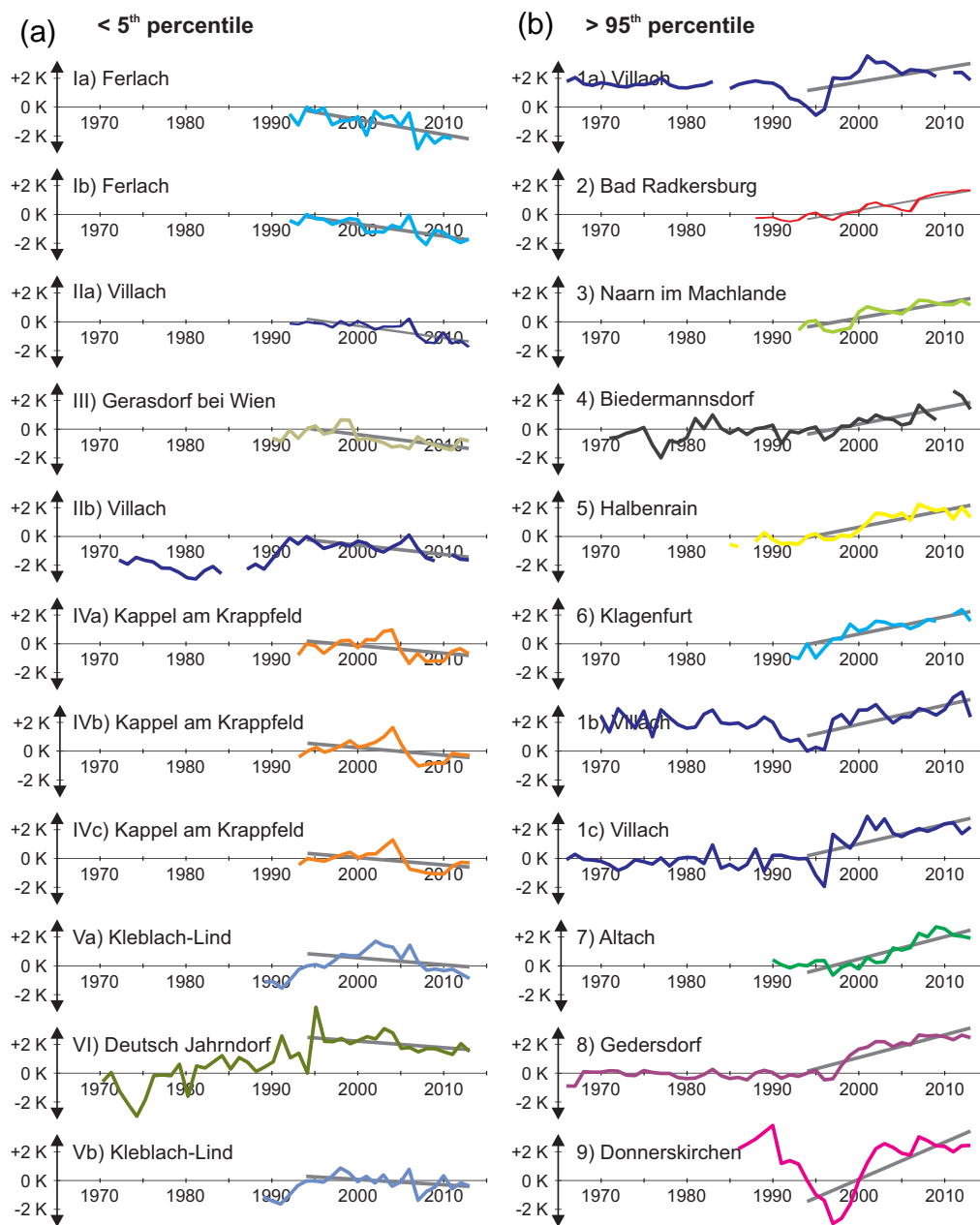


Figure 5. Annual mean time series and linear fit (in grey) of the wells with the lowest (a, numbered with roman numerals) and highest (b, numbered with arabic numbers) temperature changes in the timeframe 1994–2013. See Figs. S5 and S7 for an overview of the locations. They are placed in ascending order with the highest temperature change at the bottom.

1997 is likely the cause of the sudden temperature increase, but concrete evidence could not be identified.

3.3 Climate regime shifts

All detected CRS of the spatial median temperatures time series are shown in Fig. 6a. Overall GWTs increased by 1.2 K between the first and last CRS and SAT increased by 1.5 K.

Global CRS in air and also groundwater were detected for the late 70s, the late 80s and the late 90s by Menberg et al. (2014). Using the same algorithm spatial median annual mean GWT and SAT in Austria show shifts in the late 80s and 90s (Fig. 6a). GWTs show additional shifts in 1981 and 2007. While the shift in the late 80s is observed during the same year (1988) in GWT and SAT, the shift in the late 90s appears earlier and is more significant in GWTs. However, because SATs are the drivers of GWTs and not vice versa,

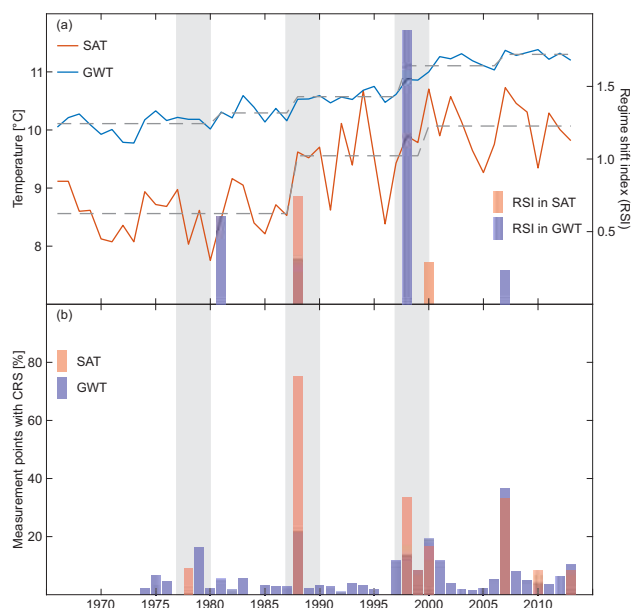


Figure 6. (a) Median groundwater temperature (blue) and surface air temperature (red) of all wells or rather weather stations as well as the corresponding CRS in the form of the regime shift index (RSI). (b) Percentage of measurement points in GWT (blue) and SAT (red) that show CRS in each year. The analysis of global temperatures data indicates a regime shift at the end of the 70s, the 80s and the 90s, which are shown here as grey bars.

the fact that the GWT change precedes the SAT change suggests that this method does not have the necessary resolution to determine short time lags between SATs and GWTs. Accordingly the detected time shifts in wells within 5 km of a weather station generally do not indicate the same CRS as the weather station: of 56 CRS observed in at least one well only, 12 are also observed in a nearby weather station no more than 1 year before (Fig. S8). However, it is also important to note that some of the analysed time series only span a 20-year time period and are thus on the shorter end for a statistically relevant analysis of climate regime shifts (Rodionov, 2006).

Like with the linear approach, the goodness of the CRS and corresponding statistical step model was evaluated by determining the RMSE for the time period 1994–2013. We determined a mean RMSE value of 0.3 ± 0.1 K, which is slightly better than the RMSE for the linear fit as determined above (0.4 ± 0.2 K). Only 20 of the 227 analysed wells have a better RMSE with the linear approach than the statistical step model of the CRS approach. Hence, we conclude that the CRS method is slightly more appropriate for simulating temperature changes in groundwater than a linear approach, even for time periods as short as 20 years. However, when the individual wells and weather stations are analysed (Fig. 6b), globally observed CRS can be identified in at most 22 % (1988) of all wells. Results further show that the shift in the 90s is temporally more spread out than the shifts in

the 70s and 80s in both GWT and SAT. This indicates that this shift is less well defined, and temperatures of the globe became more variable in their temporal evolution. In accordance with this interpretation there is a higher percentage of wells with CRS in all years after 1996 than before. Furthermore, more than one-third of all weather stations and wells detect a shift in 2007, indicating this year as the start of a new climate regime within Austria. While CRS in 2007 were not observed by Menberg et al. (2014), who studied earlier time series than here, this year was also identified by Lit-zow and Mueter (2014) as the start of a new regime for both climate and biological indicators within the North Pacific Ocean. However, the dimension of the shifts does not always agree for all wells. For example, wells experiencing a shift observed in 2007 include all wells along the Drau observed in Figs. 5 and S5, which show a sudden drop in temperature for this year. In contrast, the countrywide time series in Fig. 6a indicates a positive shift in temperatures.

4 Conclusions

Temperatures in 227 shallow wells and 12 weather stations in Austria, monitored in part since 1966, were analysed in this study. Linear temperature change was determined and revealed a general increase in temperature between the years 1994 and 2013 of approximately $+0.36 \pm 0.44$ K per 10 years in the groundwater and on average $+0.24 \pm 0.13$ K per 10 years in the air. Most extreme changes in groundwater temperatures, especially temperature decrease, could be linked to local causes such as the installation of a new drinking water supply that influences nearby groundwater wells. This reveals the extent to which groundwater temperatures are dominated by local events, groundwater flow, and the thermal properties of the surroundings. When solving local problems we can therefore not recommend relying on average relationships valid on a nation scale. Accordingly the correlation between annual mean groundwater temperatures and nearby (< 5 km) air temperatures varies greatly, from -0.3 in Linz to 0.8 near Graz. However, if spatial median groundwater temperatures and surface air temperatures of all of Austria are compared, we find a significant correlation of 0.83 , demonstrating once more that groundwater temperatures are closely linked to surface temperatures and therefore experience climate change. Globally observed climate regime shifts in the late 70s, 80s and 90s could only be identified in approximately 20 % of all wells. Nevertheless, we were able to observe another shift in 2007 in 37 % of all wells and 33 % of all weather stations, indicating this year as the possible start of a new climate regime within the Alpine region. Still, further research dedicated to other climate parameters such as permafrost and snowfall is necessary to validate these findings. Additionally, our observations made in Austria should be transferred to similar regions in the world testing the transferability of the presented results. Overall cli-

mate regimes represent measured temperature slightly better (RMSE: 0.3 ± 0.1 K) than the linear fit (RMSE: 0.4 ± 0.2 K).

Data availability. The GWT data used in the study were provided by the Austrian Federal Ministry of Sustainability and Tourism Directorate-General IV. – Water Management (BMNT, 2016) and are available to the public under <http://ehyd.gv.at/>.

The SAT data used in this study were acquired through the Central Institution for Meteorology and Geodynamics (ZAMG), Austria, in 2017.

The Supplement related to this article is available online at <https://doi.org/10.5194/hess-22-3143-2018-supplement>.

Competing interests. The authors declare that they have no conflict of interest.

Acknowledgements. We would like to thank Erich Fischer (BMNT, formerly of BMLFUW) for information and data regarding groundwater temperatures, and Alexander Orlik (ZAMG) for information and data regarding surface air temperatures of Austria.

Furthermore, we would like to acknowledge the financial support for the first author through portfolio project “Geoenergy” of the Helmholtz Association of German Research Centres (HGF) and the support by the Deutsche Forschungsgemeinschaft and Open Access Publishing Fund of the Karlsruhe Institute of Technology. A big thank you also to one anonymous reviewer and to Randy Hunt for their helpful and very constructive comments.

The article processing charges for this open-access publication were covered by a Research Centre of the Helmholtz Association.

Edited by: Brian Berkowitz

Reviewed by: Randy Hunt and one anonymous referee

References

- Andrushchysyn, O. P., Wilson, K. P., and Williams, D. D.: Climate change-predicted shifts in the temperature regime of shallow groundwater produce rapid responses in ciliate communities, *Glob. Change Biol.*, 15, 2518–2538, <https://doi.org/10.1111/j.1365-2486.2009.01911.x>, 2009.
- Attard, G., Rossier, Y., Winiarski, T., and Eisenlohr, L.: Deterministic modeling of the impact of underground structures on urban groundwater temperature, *Sci. Total Environ.*, 572, 986–994, <https://doi.org/10.1016/j.scitotenv.2016.07.229>, 2016.
- Auer, I., Böhm, R., Jurkovic, A., Lipa, W., Orlik, A., Potzmann, R., Schöner, W., Ungersböck, M., Matulla, C., Briffa, K., Jones, P., Efthymiadis, D., Brunetti, M., Nanni, T., Maugeri, M., Merz, L., Mestre, O., Moisselin, J.-M., Begert, M., Müller-Westermeier, G., Kveton, V., Bochnicek, O., Stastny, P., Lapin, M., Szalai, S., Szentimrey, T., Cegnar, T., Dolinar, M., Gajic-Capka, M., Zaninovic, K., Majstorovic, Z., and Nieplova, E.: HISTALP – historical instrumental climatological surface time series of the Greater Alpine Region, *Int. J. Climatol.*, 27, 17–46, <https://doi.org/10.1002/joc.1377>, 2007.
- Bayer, P., Rivera, J. A., Schweizer, D., Schärli, U., Blum, P., and Rybach, L.: Extracting past atmospheric warming and urban heating effects from borehole temperature profiles, *Geothermics*, 64, 289–299, <https://doi.org/10.1016/j.geothermics.2016.06.011>, 2016.
- Beltrami, H., Ferguson, G., and Harris, R. N.: Long-term tracking of climate change by underground temperatures, *Geophys. Res. Lett.*, 32, L19707, <https://doi.org/10.1029/2005GL023714>, 2005.
- Bense, V. and Beltrami, H.: Impact of horizontal groundwater flow and localized deforestation on the development of shallow temperature anomalies, *J. Geophys. Res.*, 112, F04015, <https://doi.org/10.1029/2006JF000703>, 2007.
- Bense, V. F. and Kurylyk, B. L.: Tracking the Subsurface Signal of Decadal Climate Warming to Quantify Vertical Groundwater Flow Rates, *Geophys. Res. Lett.*, 44, 12244–12253, <https://doi.org/10.1002/2017GL076015>, 2017.
- Benz, S. A., Bayer, P., Menberg, K., Jung, S., and Blum, P.: Spatial resolution of anthropogenic heat fluxes into urban aquifers, *Sci. Total Environ.*, 524–525, 427–439, <https://doi.org/10.1016/j.scitotenv.2015.04.003>, 2015.
- Benz, S. A., Bayer, P., Goettsche, F. M., Olesen, F. S., and Blum, P.: Linking Surface Urban Heat Islands with Groundwater Temperatures, *Environ. Sci. Technol.*, 50, 70–78, <https://doi.org/10.1021/acs.est.5b03672>, 2016.
- Benz, S. A., Bayer, P., and Blum, P.: Global patterns of shallow groundwater temperatures, *Environ. Res. Lett.*, 12, 34005, <https://doi.org/10.1088/1748-9326/aa5fb0>, 2017a.
- Benz, S. A., Bayer, P., and Blum, P.: Identifying anthropogenic anomalies in air, surface and groundwater temperatures in Germany, *Sci. Total Environ.*, 584–585, 145–153, <https://doi.org/10.1016/j.scitotenv.2017.01.139>, 2017b.
- Blaschke, A. P., Merz, R., Parajka, J., Salinas, J., and Blöschl, G.: Auswirkungen des Klimawandels auf das Wasserdargebot von Grund- und Oberflächenwasser, *Österreichische Wasser- und Abfallwirtschaft*, 63, 31–41, <https://doi.org/10.1007/s00506-010-0273-3>, 2011.
- BMNT: Austrian Federal Ministry of Sustainability and Tourism Directorate-General IV. – Water Management, eHYD, <http://ehyd.gv.at/> (last access: January 2016), 2017.
- Burns, E. R., Zhu, Y., Zhan, H., Manga, M., Williams, C. F., Ingebritsen, S. E., and Dunham, J. B.: Thermal effect of climate change on groundwater-fed ecosystems, *Water Resour. Res.*, 53, 3341–3351, <https://doi.org/10.1002/2016WR020007>, 2017.
- Cermak, V., Bodri, L., Kresl, M., Dědeček, P., and Šafanda, J.: Eleven years of ground-air temperature tracking over different land cover types, *Int. J. Climatol.*, 37, 1084–1099, <https://doi.org/10.1002/joc.4764>, 2017.
- Easterling, D. R. and Peterson, T. C.: A new method for detecting undocumented discontinuities in climatological time series, *Int. J. Climatol.*, 15, 369–377, <https://doi.org/10.1002/joc.3370150403>, 1995.
- Ferguson, G. and Woodbury, A. D.: The effects of climatic variability on estimates of recharge from temperature profiles,

- Ground Water, 43, 837–842, <https://doi.org/10.1111/j.1745-6584.2005.00088.x>, 2005.
- Ferguson, G., Beltrami, H., and Woodbury, A. D.: Perturbation of ground surface temperature reconstructions by groundwater flow?, *Geophys. Res. Lett.*, 33, L13708, <https://doi.org/10.1029/2006GL026634>, 2006.
- Figura, S., Livingstone, D. M., Hoehn, E., and Kipfer, R.: Regime shift in groundwater temperature triggered by the Arctic Oscillation, *Geophys. Res. Lett.*, 38, L23401, <https://doi.org/10.1029/2011GL049749>, 2011.
- Figura, S., Livingstone, D. M., and Kipfer, R.: Forecasting Groundwater Temperature with Linear Regression Models Using Historical Data, *Ground Water*, 53, 943–954, <https://doi.org/10.1111/gwat.12289>, 2015.
- Gunawardhana, L. N. and Kazama, S.: Climate change impacts on groundwater temperature change in the Sendai plain, Japan, *Hydrol. Process.*, 25, 2665–2678, <https://doi.org/10.1002/hyp.8008>, 2011.
- Harris, R. N. and Chapman, D. S.: Borehole Temperatures and a Baseline for 20th-Century Global Warming Estimates, *Science*, 275, 1618–1621, <https://doi.org/10.1126/science.275.5306.1618>, 1997.
- Holman, I. P.: Climate change impacts on groundwater recharge-uncertainty, shortcomings, and the way forward?, *Hydrogeol. J.*, 14, 637–647, <https://doi.org/10.1007/s10040-005-0467-0>, 2006.
- Huang, S., Pollack, H. N., and Shen, P. Y.: Temperature trends over the past five centuries reconstructed from borehole temperatures, *Nature*, 403, 756–758, 2000.
- Hunt, R. J., Walker, J. F., Selbig, W. R., Westenbroek, S. M., and Regan, R. S.: Simulation of Climate-Change Effects on Streamflow, Lake Water Budgets, and Stream Temperature Using GSFLOW and SNTMP, Trout Lake Watershed, Wisconsin, U.S. Geological Survey Scientific Investigations Report 2013-5159, 118 pp., 2013.
- Irvine, D. J., Cartwright, I., Post, V. E. A., Simmons, C. T., and Banks, E. W.: Uncertainties in vertical groundwater fluxes from 1-D steady state heat transport analyses caused by heterogeneity, multidimensional flow, and climate change, *Water Resour. Res.*, 52, 813–826, <https://doi.org/10.1002/2015WR017702>, 2016.
- Ji, F., Wu, Z., Huang, J., and Chassignet, E. P.: Evolution of land surface air temperature trend, *Nat. Clim. Change*, 4, 462–466, <https://doi.org/10.1038/nclimate2223>, 2014.
- Jones, P. D., New, M., Parker, D. E., Martin, S., and Rigor, I. G.: Surface air temperature and its changes over the past 150 years, *Rev. Geophys.*, 37, 173–199, <https://doi.org/10.1029/1999RG900002>, 1999.
- Jyväsjarvi, J., Marttila, H., Rossi, P. M., Ala-Aho, P., Olofsson, B., Nisell, J., Backman, B., Ilmonen, J., Virtanen, R., Paasivirta, L., Britschgi, R., Kløve, B., and Muotka, T.: Climate-induced warming imposes a threat to north European spring ecosystems, *Glob. Change Biol.*, 21, 4561–4569, <https://doi.org/10.1111/gcb.13067>, 2015.
- Kløve, B., Ala-Aho, P., Bertrand, G., Gurdak, J. J., Kupfersberger, H., Kværner, J., Muotka, T., Mykrä, H., Preda, E., Rossi, P., Uvo, C. B., Velasco, E., and Pulido-Velazquez, M.: Climate change impacts on groundwater and dependent ecosystems, *J. Hydrol.*, 518, 250–266, <https://doi.org/10.1016/j.jhydrol.2013.06.037>, 2014.
- Kolb, C., Pozzi, M., Samaras, C., and VanBriesen, J. M.: Climate Change Impacts on Bromide, Trihalomethane Formation, and Health Risks at Coastal Groundwater Utilities, *ASCE-ASME J. Risk Uncertainty Eng. Syst., Part A: Civ. Eng.*, 3, 4017006, <https://doi.org/10.1061/AJRUA6.0000904>, 2017.
- Kollet, S. J., Cvijanovic, I., Schüttemeyer, D., Maxwell, R. M., Moene, A. F., and Bayer, P.: The Influence of Rain Sensible Heat and Subsurface Energy Transport on the Energy Balance at the Land Surface, *Vadose Zone J.*, 8, 846–857, <https://doi.org/10.2136/vzj2009.0005>, 2009.
- Krakow, S. and Fuchs-Hanusch, D.: Fernkälteversorgung zur Vermeidung von Grundwassererwärmungen und Nutzungskonflikten am Beispiel der Stadt Linz – Bewertung auf Basis ÖWAV-Regelblatt 207 und qualitativer Nutzwertanalyse, *Österreichische Wasser- und Abfallwirtschaft*, 68, 354–367, <https://doi.org/10.1007/s00506-016-0324-5>, 2016.
- Kupfersberger, H.: Heat transfer modelling of the Leibnitzer Feld aquifer, Austria, *Environ. Earth Sci.*, 59, 561–571, <https://doi.org/10.1007/s12665-009-0054-0>, 2009.
- Kupfersberger, H., Rock, G., and Draxler, J. C.: Inferring near surface soil temperature time series from different land uses to quantify the variation of heat fluxes into a shallow aquifer in Austria, *J. Hydrol.*, 552, 564–577, <https://doi.org/10.1016/j.jhydrol.2017.07.030>, 2017.
- Kurylyk, B. L., Bourque, C. P.-A., and MacQuarrie, K. T. B.: Potential surface temperature and shallow groundwater temperature response to climate change: an example from a small forested catchment in east-central New Brunswick (Canada), *Hydrol. Earth Syst. Sci.*, 17, 2701–2716, <https://doi.org/10.5194/hess-17-2701-2013>, 2013.
- Kurylyk, B. L., MacQuarrie, K. T. B., and McKenzie, J. M.: Climate change impacts on groundwater and soil temperatures in cold and temperate regions: Implications, mathematical theory, and emerging simulation tools, *Earth-Sci. Rev.*, 138, 313–334, <https://doi.org/10.1016/j.earscirev.2014.06.006>, 2014.
- Kurylyk, B. L., Irvine, D. J., Carey, S. K., Briggs, M. A., Werkema, D. D., and Bonham, M.: Heat as a groundwater tracer in shallow and deep heterogeneous media: Analytical solution, spreadsheet tool, and field applications, *Hydrol. Process.*, 31, 2648–2661, <https://doi.org/10.1002/hyp.11216>, 2017.
- Lee, B., Hamm, S.-Y., Jang, S., Cheong, J.-Y., and Kim, G.-B.: Relationship between groundwater and climate change in South Korea, *Geosci. J.*, 18, 209–218, <https://doi.org/10.1007/s12303-013-0062-7>, 2014.
- Linzer, H.-G., Decker, K., Peresson, H., Dell’Mour, R., and Frisch, W.: Balancing lateral orogenic float of the Eastern Alps, *Tectonophysics*, 354, 211–237, [https://doi.org/10.1016/S0040-1951\(02\)00337-2](https://doi.org/10.1016/S0040-1951(02)00337-2), 2002.
- Litzow, M. A. and Mueter, F. J.: Assessing the ecological importance of climate regime shifts: An approach from the North Pacific Ocean, *Prog. Oceanogr.*, 120, 110–119, <https://doi.org/10.1016/j.pocean.2013.08.003>, 2014.
- Loáiciga, H. A.: Climate Change and Ground Water, *Ann. Assoc. Am. Geogr.*, 93, 30–41, <https://doi.org/10.1111/1467-8306.93103>, 2003.
- Menberg, K., Blum, P., Schaffitel, A., and Bayer, P.: Long-term evolution of anthropogenic heat fluxes into a subsurface urban heat island, *Environ. Sci. Technol.*, 47, 9747–9755, <https://doi.org/10.1021/es401546u>, 2013.

- Menberg, K., Blum, P., Kurylyk, B. L., and Bayer, P.: Observed groundwater temperature response to recent climate change, *Hydrol. Earth Syst. Sci.*, 18, 4453–4466, <https://doi.org/10.5194/hess-18-4453-2014>, 2014.
- Minobe, S.: A 50–70 year climatic oscillation over the North Pacific and North America, *Geophys. Res. Lett.*, 24, 683–686, <https://doi.org/10.1029/97GL00504>, 1997.
- Moeck, C., Brunner, P., and Hunkeler, D.: The influence of model structure on groundwater recharge rates in climate-change impact studies, *Hydrogeol. J.*, 24, 1171–1184, <https://doi.org/10.1007/s10040-016-1367-1>, 2016.
- Molina-Giraldo, N., Bayer, P., Blum, P., and Cirpka, O. A.: Propagation of seasonal temperature signals into an aquifer upon bank infiltration, *Ground Water*, 49, 491–502, <https://doi.org/10.1111/j.1745-6584.2010.00745.x>, 2011.
- NOAA: Regime Shift Detection, available at: <http://www.beringclimate.noaa.gov/regimes/>, last access: 13 March 2017.
- Robl, J., Hergarten, S., and Stüwe, K.: Morphological analysis of the drainage system in the Eastern Alps, *Tectonophysics*, 460, 263–277, <https://doi.org/10.1016/j.tecto.2008.08.024>, 2008.
- Robl, J., Heberer, B., Prasicek, G., Neubauer, F., and Hergarten, S.: The topography of a continental indenter: The interplay between crustal deformation, erosion, and base level changes in the eastern Southern Alps, *J. Geophys. Res.-Earth*, 122, 310–334, <https://doi.org/10.1002/2016JF003884>, 2017.
- Rodionov, S. N.: A sequential algorithm for testing climate regime shifts, *Geophys. Res. Lett.*, 31, L09204, <https://doi.org/10.1029/2004GL019448>, 2004.
- Rodionov, S. N.: Use of prewhitening in climate regime shift detection, *Geophys. Res. Lett.*, 33, L12707, <https://doi.org/10.1029/2006GL025904>, 2006.
- Rubel, F., Brugger, K., Haslinger, K., and Auer, I.: The climate of the European Alps: Shift of very high resolution Köppen-Geiger climate zones 1800–2100, *Meteorol. Z.*, 26, 115–125, <https://doi.org/10.1127/metz/2016/0816>, 2017.
- Šafanda, J., Rajver, D., Correia, A., and Dedecek, P.: Repeated temperature logs from Czech, Slovenian and Portuguese borehole climate observatories, *Clim. Past*, 3, 453–462, <https://doi.org/10.5194/cp-3-453-2007>, 2007.
- Schmid, S. M., Fgenschuh, B., Kissling, E., and Schuster, R.: Tectonic map and overall architecture of the Alpine orogen, *Eclogae Geol. Helv.*, 97, 93–117, <https://doi.org/10.1007/s00015-004-1113-x>, 2004.
- Schubert, G., Bayer, I., Lampl, H., Shadlau, S., Wurm, M., Pavlik, W., Pestal, G., Rupp, C., and Schild, A.: Hydrogeologische Karte von Österreich 1 : 500.000, Verlag der Geologischen Bundesanstalt, Vienna, Austria, 2003.
- Scibek, J. and Allen, D. M.: Modeled impacts of predicted climate change on recharge and groundwater levels, *Water Resour. Res.*, 42, W11405, <https://doi.org/10.1029/2005WR004742>, 2006.
- Statistik Austria: Bevölkerungsstand, available at: http://www.statistik.at/web_de/statistiken/menschen_und_gesellschaft/bevoelkerung/volkszaehlungen_registerzaehlungen_abgestimmte_erwerbsstatistik/bevoelkerungsstand/index.html, last access: 22 September 2017.
- Stauffer, F., Bayer, P., Blum, P., Giraldo, N. M., and Kinzelbach, W.: Thermal use of shallow groundwater, CRC Press, Boca Raton, USA, 2017.
- Taniguchi, M. and Uemura, T.: Effects of urbanization and groundwater flow on the subsurface temperature in Osaka, Japan, *Phys. Earth Planet. In.*, 152, 305–313, <https://doi.org/10.1016/j.pepi.2005.04.006>, 2005.
- Taniguchi, M., Shimada, J., Tanaka, T., Kayane, I., Sakura, Y., Shimano, Y., Dapaah-Siakwan, S., and Kawashima, S.: Disturbances of temperature-depth profiles due to surface climate change and subsurface water flow: 1. An effect of linear increase in surface temperature caused by global warming and urbanization in the Tokyo Metropolitan Area, Japan, *Water Resour. Res.*, 35, 1507–1517, <https://doi.org/10.1029/1999WR900009>, 1999.
- Taylor, C. A. and Stefan, H. G.: Shallow groundwater temperature response to climate change and urbanization, *J. Hydrol.*, 375, 601–612, <https://doi.org/10.1016/j.jhydrol.2009.07.009>, 2009.
- Taylor, R. G., Scanlon, B., Döll, P., Rodell, M., van Beek, R., Wada, Y., Longuevergne, L., Leblanc, M., Famiglietti, J. S., Edmunds, M., Konikow, L., Green, T. R., Chen, J., Taniguchi, M., Bierkens, M. F. P., MacDonald, A., Fan, Y., Maxwell, R. M., Yechieli, Y., Gurdak, J. J., Allen, D. M., Shamsudduha, M., Hiscock, K., Yeh, P. J.-F., Holman, I., and Treidel, H.: Ground water and climate change, *Nat. Clim. Change*, 3, 322–329, <https://doi.org/10.1038/nclimate1744>, 2012.
- Uchida, Y., Sakura, Y., and Taniguchi, M.: Shallow subsurface thermal regimes in major plains in Japan with reference to recent surface warming, *Phys. Chem. Earth, Pt. A/B/C*, 28, 457–466, [https://doi.org/10.1016/S1474-7065\(03\)00065-2](https://doi.org/10.1016/S1474-7065(03)00065-2), 2003.
- Watts, G., Battarbee, R. W., Bloomfield, J. P., Crossman, J., Dacache, A., Durance, I., Elliott, J. A., Garner, G., Hannaford, J., Hannah, D. M., Hess, T., Jackson, C. R., Kay, A. L., Kernan, M., Knox, J., Mackay, J., Monteith, D. T., Ormerod, S. J., Rance, J., Stuart, M. E., Wade, A. J., Wade, S. D., Weatherhead, K., Whitehead, P. G., and Wilby, R. L.: Climate change and water in the UK – past changes and future prospects, *Prog. Phys. Geog.*, 39, 6–28, <https://doi.org/10.1177/0309133314542957>, 2015.
- Westaway, R. and Younger, P. L.: Unravelling the relative contributions of climate change and ground disturbance to subsurface temperature perturbations: Case studies from Tyneside, UK, *Geothermics*, 64, 490–515, <https://doi.org/10.1016/j.geothermics.2016.06.009>, 2016.
- Yamano, M., Goto, S., Miyakoshi, A., Hamamoto, H., Lubis, R. F., Monyrath, V., and Taniguchi, M.: Reconstruction of the thermal environment evolution in urban areas from underground temperature distribution, *Sci. Total Environ.*, 407, 3120–3128, <https://doi.org/10.1016/j.scitotenv.2008.11.019>, 2009.
- Zhu, K., Bayer, P., Grathwohl, P., and Blum, P.: Groundwater temperature evolution in the subsurface urban heat island of Cologne, Germany, *Hydrol. Process.*, 29, 965–978, <https://doi.org/10.1002/hyp.10209>, 2015.